



[Return to PPT Website](#)

Select P/N to open each product in the **ONLINE STORE**

Suzuki Instruments

Suzuki Genuine Instruments are custom-designed to provide the quality, reliability and value you expect from Suzuki Products. The wide selection allows you to accurately monitor a variety of essential functions. All instruments are lighted for night time boating and feature standard 2" and 4" diameters for easy installation.



4" Tachometers

7,000 max R.P.M. Tachs are available with or without 4-Stroke monitor functions. Monitor functions include: Low Oil Pressure Warning, Engine Temperature Warning, Check Engine Warning and Over-Rev Limit Warning.

- | | |
|--------------------|------------------------|
| 34200-93J00 | with monitor functions |
| 34200-93J20 | without monitor |



4" Tachometer With Suzuki Troll Mode Scale

Easy to read 4" Tachometer has a scale from 0-7,000 RPMs for standard use, and a secondary scale from 0-3,000 RPMs with markers at 50 RPM intervals for use with the Suzuki Troll Mode System*. Gauge also includes warning lamps for Engine Temperature, Low Oil, Check Engine and Over-Rev. When in troll mode, Over-Rev lamp stays on to indicate that Troll mode has been engaged. The secondary RPM scale is designed to make setting and maintaining a lower troll speed simple. Compatible DF40A/50A/50AV/60A/60AV/70A/90A/115A/140A/200AP/250SS (DF300 requires digital instrumentation).*See engine owner's manual for information about Suzuki Troll Mode system. Not all models come equipped with trolling mode system. Accessory Troll Mode Switch required for Suzuki Troll Mode System use. Suzuki recommends the use of this gauge for trolling use.

- | | |
|--------------------|--|
| 34200-93J51 | DF40A/50A/50AV/60A/60AV/70A/90A/115A/140A/200AP/250SS (DF300 requires digital instrumentation) |
|--------------------|--|



Trolling Mode Control Switch

Allows the use of the Suzuki Troll Mode on equipped engines. When Troll mode is engaged, this switch allows for adjustments of engine RPM in 50 RPM increments, from idle to 1200 RPM to make setting and maintaining a trolling speed easy. Consult owner's manual or Suzuki Outboard Dealer for additional details on Suzuki Troll System operation.

Compatible DF40A/50A/50AV/60A/60AV/70A/90A/115A/140A/200AP/250AP/300AP

- | | |
|--------------------|-----------------|
| 37860-87L00 | Trolling switch |
|--------------------|-----------------|



4" Speedometers

Bourdon-tube type speedometer with readings in M.P.H. and Km/h. Includes vinyl tube, plus all installation instructions and hardware. *Pitot tube 34190-87D00 must be ordered separately.

34100-93J00	80 mph
34100-93J20	50 mph
34190-87D00*	Pitot Tube



2" Hour Meter

12 volt electric motor driven meter indicates the number of hours your outboard motor has been operated to indicate when periodic services are necessary.

34500-93J00	Black
--------------------	-------



2" Trim Meter

Magnetic type gauge shows trim angle for optimum performance and efficiency.

34800-93J00	Black
--------------------	-------



2" Voltmeter

A well charged battery is essential for quick and easy starts. Monitor the charging system using a Voltmeter.

34600-93J00	Black
--------------------	-------



2" Fuel Gauge

Operates on 12 volts with magnetically damped needle. Works with most fuel tank sending units.

34300-93J00	Black
--------------------	-------



2" Water Pressure Gauge 15 psi

Bourdon-tube type gauge measures cooling water pressure. Instructions and dash installation hardware included. Order Installation kit for appropriate model.

34650-93J20	Black
--------------------	-------



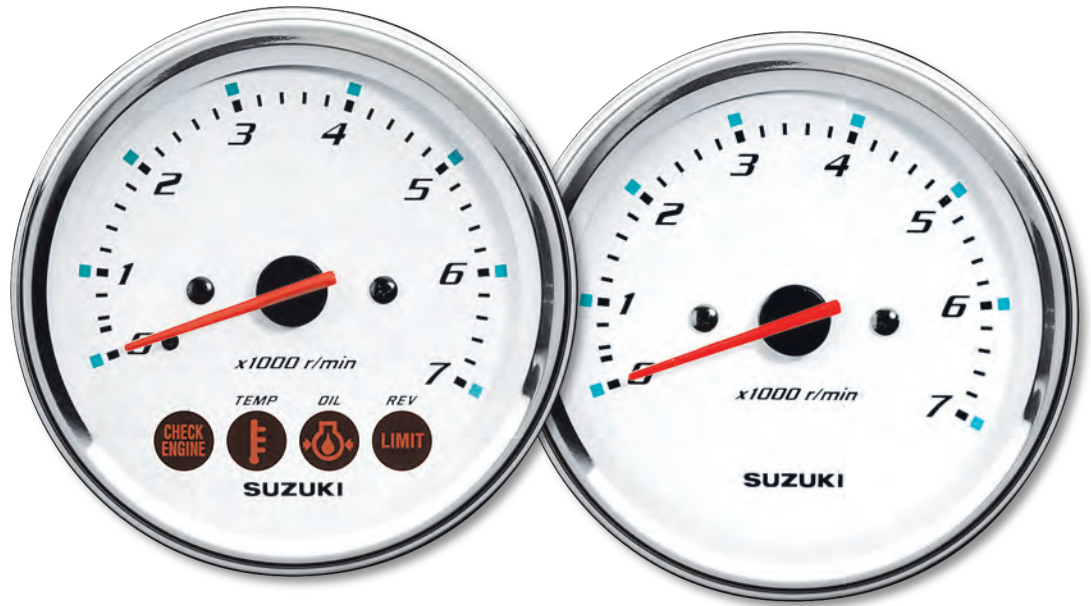
Water Pressure Gauge Installation Kits

Kit includes fittings and hoses needed for motor to gauge connection.

34660-93J00	DF200/225/250/250AP/300AP
34660-96J00	DF150/175/200A
34660-99E00	DF60/70
34660-87J00	DF40/50
34660-90J02	DF40A/50A/50AV/60A/60AV/70A/90/90A/115/115A/140/140A

Suzuki Instruments

Suzuki Genuine Instruments are custom-designed to provide the quality, reliability and value you expect from Suzuki Products. The wide selection allows you to accurately monitor a variety of essential functions. All instruments are lighted for night time boating and feature standard 2" and 4" diameters for easy installation.



4" Tachometers

7,000 max R.P.M. Tachs are available with or without 4-Stroke monitor functions. Monitor functions include: Low Oil Pressure Warning, Engine Temperature Warning, Check Engine Warning and Over-Rev Limit Warning.

34200-93J12	with monitor functions
34200-93J32	without monitor



4" Tachometer With Suzuki Troll Mode Scale

Easy to read 4" Tachometer has a scale from 0-7,000 RPMs for standard use, and a secondary scale from 0-3,000 RPMs with markers at 50 RPM intervals for use with the Suzuki Troll Mode System*. Gauge also includes warning lamps for Engine Temperature, Low Oil, Check Engine and Over-Rev. When in troll mode, Over-Rev lamp stays on to indicate that Troll mode has been engaged. The secondary RPM scale is designed to make setting and maintaining a lower troll speed simple. Compatible DF40A/50A/50AV/60A/60AV/70A/90A/115A/140A/200AP/250SS (DF300 requires digital instrumentation). *See engine owner's manual for information about Suzuki Troll Mode system. Not all models come equipped with trolling mode system. Accessory Troll Mode Switch required for Suzuki Troll Mode System use. Suzuki recommends the use of this gauge for trolling use.

34200-93J51	DF40A/50A/50AV/60A/60AV/70A/90A/115A/140A/200AP/250SS (DF300 requires digital instrumentation)
--------------------	--



Trolling Mode Control Switch

Allows the use of the Suzuki Troll Mode on equipped engines. When Troll mode is engaged, this switch allows for adjustments of engine RPM in 50 RPM increments, from idle to 1200 RPM to make setting and maintaining a trolling speed easy. Consult owner's manual or Suzuki Outboard Dealer for additional details on Suzuki Troll System operation.

Compatible DF40A/50A/50AV/60A/60AV/70A/90A/115A/140A/200AP/250AP/300AP

37860-87L00	Trolling switch
--------------------	-----------------

Suzuki Instruments

Economically priced, high quality instruments feature easy plug-in wiring connections, perimeter-lighted dial, black bezels, contoured pointers and fog resistant glass lenses. All use standard 2" or 4" diameters for easy dash installation.



4" Speedometer

Easy to read 4" Speedometer features include lighted dial, contoured pointer and fog resistant glass lens.
*Requires Tubing 99105-80009.

99105-80002	Black 60 mph
99105-80009*	Speedometer Tubing (not shown)



4" Tachometers

7,000 max R.P.M. Tachs are available with or without 4-Stroke monitor functions. Monitor functions include: Low Oil Pressure Warning, Engine Temperature Warning, Check Engine Warning and Over-Rev Limit Warning.

99105-80001	Black - With monitor functions
99105-80000	Black - Without monitor functions



Suzuki Instruments

Economically priced, high quality instruments feature easy plug-in wiring connections, perimeter-lighted dial, black bezels, contoured pointers and fog resistant glass lenses. All use standard 2" or 4" diameters for easy dash installation.



4" Speedometer

Easy to read 4" Speedometer features include lighted dial, contoured pointer and fog resistant glass lens.
*Requires Tubing 99105-80009.

99105-80102 White 60 mph

99105-80009* Speedometer Tubing (not shown)



4" Tachometers

7,000 max R.P.M. Tachs are available with or without 4-Stroke monitor functions. Monitor functions include: Low Oil Pressure Warning, Engine Temperature Warning, Check Engine Warning and Over-Rev Limit Warning.

99105-80101 White - With monitor functions

99105-80100 White - Without monitor functions



Suzuki Control Boxes

Suzuki offers Single Binnacle Control Boxes for your single Suzuki outboard application, or choose a Dual Binnacle Control Box to manage two Suzuki outboards masterfully. Suzuki Genuine Control Boxes define accuracy, user-friendliness and durability.



Single Binnacle Control Box Kit

Single Binnacle Control Box uses a convenient thumb-operated power trim and tilt switch, push-button shifting disengagement for faster warm ups and built-in neutral safety switch. Kit includes items listed. *Main Wiring Harness must be ordered separately, see below.



67000-93J05	Single Binnacle Control Box Kit - includes:
37100-96J24	Ignition Switch Panel with Emergency Stop and Warning Buzzer Assembly
67200-93J13	Single Binnacle Control Box Assembly

Dual Binnacle Control Box Kit

Dual Binnacle Control Box includes the same features as the Single Binnacle Control Box, plus a unique base mounted PTT system allowing you to trim the motors individually then adjust them together for maximum performance. Kit includes items listed. *Main Wiring Harness must be ordered separately, see below.



67000-93J15*	Dual Binnacle Control Box Kit - Includes:
37100-96J14	Dual Ignition Switch with Emergency Stop
38500-92X50	Warning Buzzers (2)
67200-93J23	Dual Binnacle Control Box Assembly



Replacement Control Boxes

67200-93J13	Single Binnacle Control Box	'05 - Current
67200-93J23	Dual Binnacle Control Box	'05 - Current
67200-93J32	Flush Mount Control Box	'05 - Current



**Flush Mount
Binnacle Control
Box Kit**

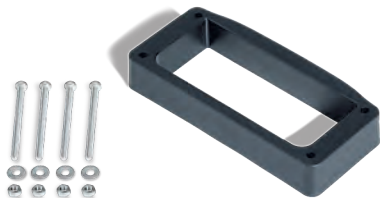
Suzuki's top quality Flush Mount Control Box features include a smooth action, thumb control power trim and tilt switch, a push button to disengage the shifting for faster warm-ups and a built in neutral safety switch. Reversible for left hand installations. Kit includes items listed.

*Main Wiring Harness must be ordered separately, see below.

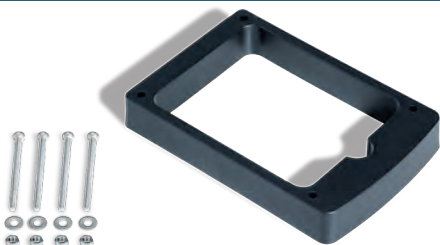
67000-93J26*	Flush Mount Binnacle Control Box Kit - Includes:
37100-96J24	Ignition Switch Panel with Emergency Stop and Warning Buzzer Assembly
67200-93J32	Flush Mount Control Box

Miscellaneous Components

38500-92X50	Warning Buzzer. Replacement for DF models.
36620-93J20	Control Box Adaptor Harness. Adapts 2005+ model control box with square connector to 2004 and earlier motors with round connector.
36620-93J30	Control Box Adaptor Harness. Adapts 2005+ model engine with square connector to 2004 and earlier harness with round connector.



67500-93J00 Single Binnacle Control Box Spacer



67500-93J10 Dual Binnacle Control Box Spacer



Side Mount Control Box Kits

Side Mount Control Boxes can be tailored to your needs. Standard features include a fast idle lever for easy warm-ups, a key-type ignition switch, and an emergency stop switch. *Main Wiring Harness must be ordered separately, see below.

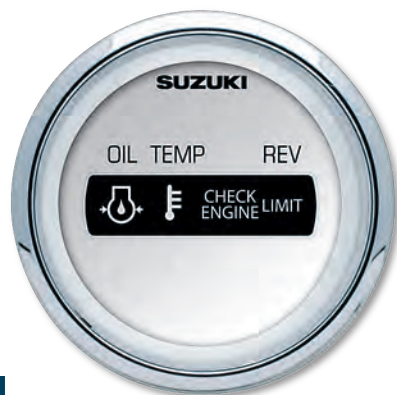
67200-91J20	DF4/6	'03 - '10
67200-89E35	DF9.9/15	'97 - '04
67200-94J20	DF9.9/15	'05 - '10
	DF8A/9.9A	'10 - Current
	DF25 V-Twin	'06 - Current
	DF25A/30A (W/O PT or PTT)	'14 - Current
67200-99E56	DF25/30 (W+W/O PT)	'00 - '04
67200-94J20	DF25/30	'05 - '08
67200-99E56	DF40/50	'99 - '04
	DF60/70	'98 - '04
67200-93J50	DF25A/30A (With PT or PTT)	'14 - Current
	DF40/50	'05 - '10
	DF40A/50A/50AV/60A/60AV	'10 - Current
	DF60/70	'05 - '10
	DF70A/90A	'10 - Current
	DF90/115/140	'05 - Current
	DF150/175/200A	'06 - Current
	DF200/225/250	'05 - Current

Wiring Harnesses

Analog Wiring Harnesses.

36620-94J01	21' Wiring Harness (NON PT or PTT)
36620-93J52	16' Wiring Harness (PT or PTT)
36620-93J02	21' Wiring Harness (PT or PTT)
36620-93J62	26' Wiring Harness (PT or PTT)





2" Engine Monitor Gauge

Engine Monitor Gauge for 4-stroke engines helps alert you to low oil pressure, high engine temperature and engine over-rev.

99105-80108 White



2" Trim Gauge

To help maintain steering stability and good performance, proper trim angle is essential. The Trim Gauge helps you monitor the trim angle. For use with 2-wire senders.

99105-80105 White



2" Hour Gauge

Handy Hour Meter helps you keep track of the time between services and total running time.

99105-80107 White



2" Fuel Gauge

Adding a Fuel Gauge can help you monitor fuel level. Connects easily using your boat's fuel sending unit harness.

99105-80103 White



2" Voltmeter

A well charged battery is essential for quick and easy starts. Monitor the charging system using a Voltmeter.

99105-80106 White



2" Water Pressure Gauge 30 psi

Bourdon-tube type gauge measures cooling water pressure. Instructions and dash installation hardware included. Order Installation kit for appropriate model.

99105-80104 White



Water Pressure Gauge Installation Kits

Kit includes fittings and hoses needed for motor to gauge connection.

34660-93J00	DF200/225/250/250AP/300AP	34660-87J00	DF40/50
34660-96J00	DF150/175/200A	34660-99E00	DF60/70
34660-90J02	DF40A/50A/50AV/60A/60AV/70A/90A/90/115/115A/140/140A		



2" Engine Monitor Gauge

Engine Monitor Gauge for 4-stroke engines helps alert you to low oil pressure, high engine temperature and engine over-rev.

99105-80008 Black



2" Trim Gauge

To help maintain steering stability and good performance, proper trim angle is essential. The Trim Gauge helps you monitor the trim angle. For use with 2-wire senders.

99105-80005 Black



2" Hour Gauge

Handy Hour Meter helps you keep track of the time between services and total running time.

99105-80007 Black



2" Fuel Gauge

Adding a Fuel Gauge can help you monitor fuel level. Connects easily using your boat's fuel sending unit harness.

99105-80003 Black



2" Voltmeter

A well charged battery is essential for quick and easy starts. Monitor the charging system using a Voltmeter.

99105-80006 Black



2" Water Pressure Gauge 30 psi

Bourdon-tube type gauge measures cooling water pressure. Instructions and dash installation hardware included. Order Installation kit for appropriate model.

99105-80004 Black



Water Pressure Gauge Installation Kits

Kit includes fittings and hoses needed for motor to gauge connection.

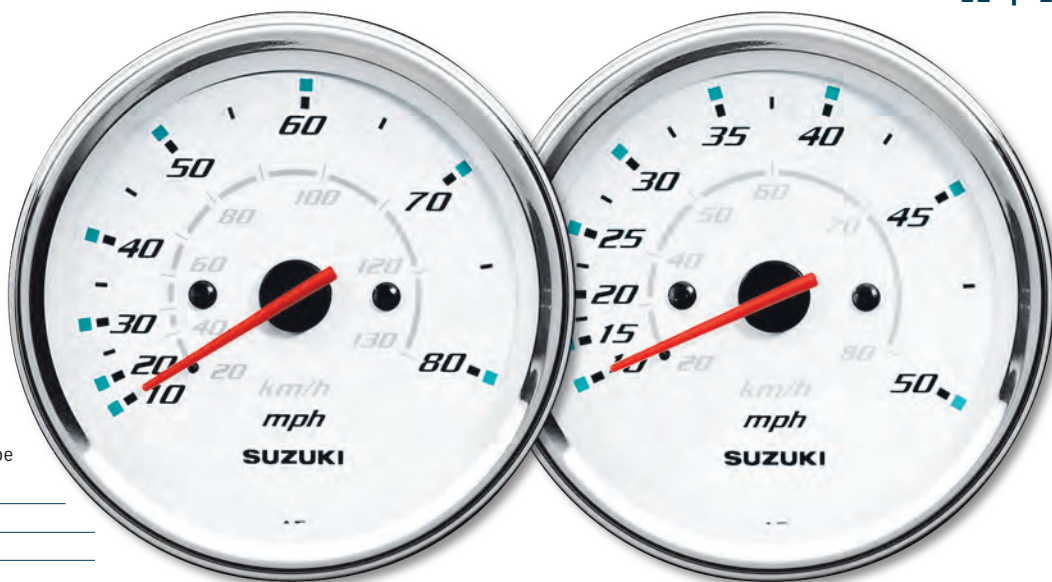
34660-93J00	DF200/225/250/250AP/300AP	34660-87J00	DF40/50
34660-96J00	DF150/175/200A	34660-99E00	DF60/70
34660-90J02	DF40A/50A/50AV/60A/60AV/70A/90A/90/115/115A/140/140A		



4" Speedometers

Bourdon-tube type speedometer with readings in M.P.H. and Km/h. Includes vinyl tube, plus all installation instructions and hardware. *Pitot tube 34190-87D00 must be ordered separately.

34100-93J11	80 mph
34100-93J31	50 mph
34190-87D00*	Pitot Tube



2" Hour Meter

12 volt electric motor driven meter indicates the number of hours your outboard motor has been operated to indicate when periodic services are necessary.

34500-93J11	White
--------------------	-------



2" Trim Meter

Magnetic type gauge shows trim angle for optimum performance and efficiency.

34800-93J11	White
--------------------	-------



2" Voltmeter

A well charged battery is essential for quick and easy starts. Monitor the charging system using a Voltmeter.

34600-93J11	White
--------------------	-------



2" Fuel Gauge

Operates on 12 volts with magnetically damped needle. Works with most fuel tank sending units.

34300-93J11	White
--------------------	-------



2" Water Pressure Gauge 15 psi

Bourdon-tube type gauge measures cooling water pressure. Instructions and dash installation hardware included. Order Installation kit for appropriate model.

34650-93J31	White
--------------------	-------



Water Pressure Gauge Installation Kits

Kit includes fittings and hoses needed for motor to gauge connection.

34660-93J00	DF200/225/250/250AP/300AP
34660-96J00	DF150/175/200A
34660-99E00	DF60/70
34660-87J00	DF40/50
34660-90J02	DF40A/50A/50AV/60A/60AV/70A/90/90A/115/115A/140/140A