



[Return to PPT Website](#)

[Select P/N to open each product in the ONLINE STORE](#)

Suzuki Instruments

Suzuki Genuine Instruments are custom-designed to provide the quality, reliability and value you expect from Suzuki Products. The wide selection allows you to accurately monitor a variety of essential functions. All instruments are lighted for night time boating and feature standard 2" and 4" diameters for easy installation.



4" Tachometers

7,000 max R.P.M. Tachs are available with or without 4-Stroke monitor functions. Monitor functions include: Low Oil Pressure Warning, Engine Temperature Warning, Check Engine Warning and Over-Rev Limit Warning.

34200-93J00	with monitor functions
34200-93J20	without monitor



4" Tachometer With Suzuki Troll Mode Scale

Easy to read 4" Tachometer has a scale from 0-7,000 RPMs for standard use, and a secondary scale from 0-3,000 RPMs with markers at 50 RPM intervals for use with the Suzuki Troll Mode System*. Gauge also includes warning lamps for Engine Temperature, Low Oil, Check Engine and Over-Rev. When in troll mode, Over-Rev lamp stays on to indicate that Troll mode has been engaged. The secondary RPM scale is designed to make setting and maintaining a lower troll speed simple. Compatible DF40A/50A/50AV/60A/60AV/70A/90A/115A/140A/200AP/250SS (DF300 requires digital instrumentation).*See engine owner's manual for information about Suzuki Troll Mode system. Not all models come equipped with trolling mode system. Accessory Troll Mode Switch required for Suzuki Troll Mode System use. Suzuki recommends the use of this gauge for trolling use.

34200-93J51	DF40A/50A/50AV/60A/60AV/70A/90A/115A/140A/200AP/250SS (DF300 requires digital instrumentation)
--------------------	--

Trolling Mode Control Switch

Allows the use of the Suzuki Troll Mode on equipped engines. When Troll mode is engaged, this switch allows for adjustments of engine RPM in 50 RPM increments, from idle to 1200 RPM to make setting and maintaining a trolling speed easy. Consult owner's manual or Suzuki Outboard Dealer for additional details on Suzuki Troll System operation.

Compatible DF40A/50A/50AV/60A/60AV/70A/90A/115A/140A/200AP/250AP/300AP

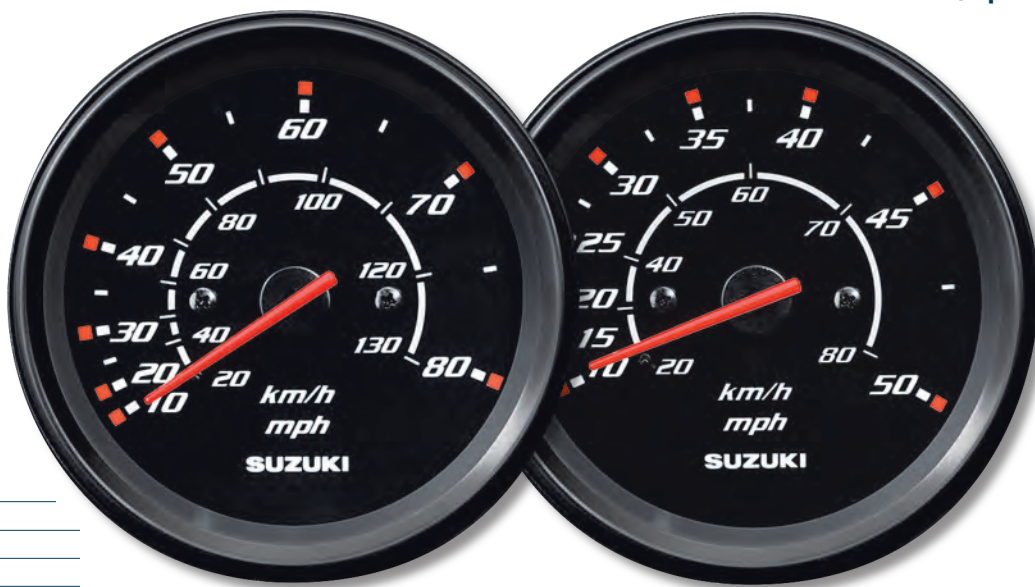
37860-87L00	Trolling switch
--------------------	-----------------



**4" Speedometers**

Bourdon-tube type speedometer with readings in M.P.H. and Km/h. Includes vinyl tube, plus all installation instructions and hardware. *Pitot tube 34190-87D00 must be ordered separately.

34100-93J00	80 mph
34100-93J20	50 mph
34190-87D00*	Pitot Tube

**2" Hour Meter**

12 volt electric motor driven meter indicates the number of hours your outboard motor has been operated to indicate when periodic services are necessary.

34500-93J00	Black
--------------------	-------

**2" Trim Meter**

Magnetic type gauge shows trim angle for optimum performance and efficiency.

34800-93J00	Black
--------------------	-------

**2" Voltmeter**

A well charged battery is essential for quick and easy starts. Monitor the charging system using a Voltmeter.

34600-93J00	Black
--------------------	-------

**2" Fuel Gauge**

Operates on 12 volts with magnetically damped needle. Works with most fuel tank sending units.

34300-93J00	Black
--------------------	-------

**2" Water Pressure Gauge 15 psi**

Bourdon-tube type gauge measures cooling water pressure. Instructions and dash installation hardware included. Order Installation kit for appropriate model.

34650-93J20	Black
--------------------	-------

**Water Pressure Gauge Installation Kits**

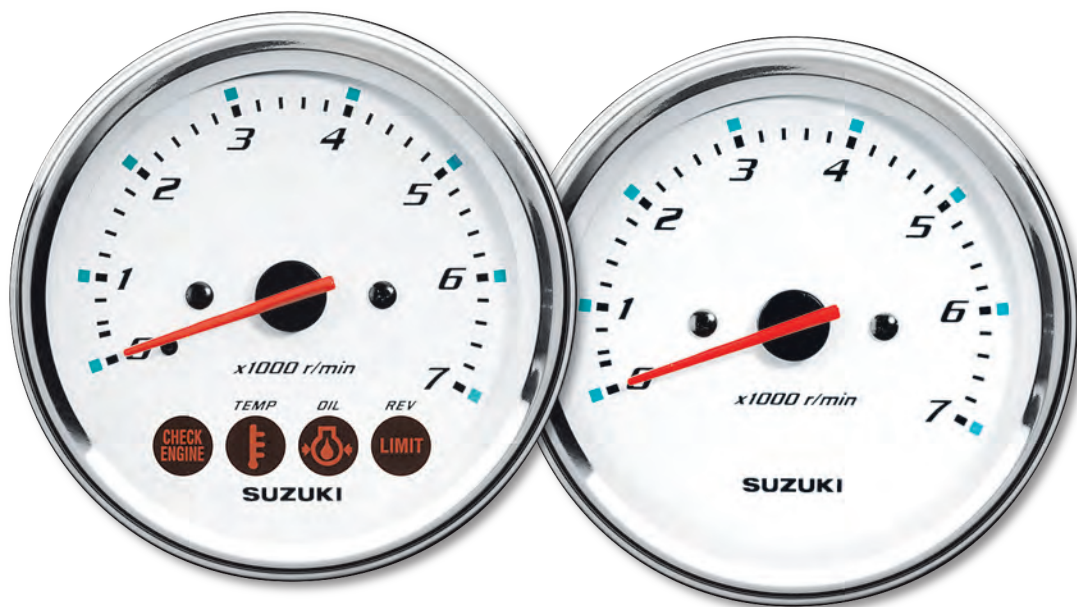
Kit includes fittings and hoses needed for motor to gauge connection.

34660-93J00	DF200/225/250/250AP/300AP
34660-96J00	DF150/175/200A
34660-99E00	DF60/70
34660-87J00	DF40/50
34660-90J02	DF40A/50A/50AV/60A/60AV/70A/90/90A/115/115A/140/140A

Suzuki Instruments

Suzuki Genuine Instruments are custom-designed to provide the quality, reliability and value you expect from Suzuki Products.

The wide selection allows you to accurately monitor a variety of essential functions. All instruments are lighted for night time boating and feature standard 2" and 4" diameters for easy installation.



4" Tachometers

7,000 max R.P.M. Tachs are available with or without 4-Stroke monitor functions. Monitor functions include: Low Oil Pressure Warning, Engine Temperature Warning, Check Engine Warning and Over-Rev Limit Warning.

34200-93J12 with monitor functions

34200-93J32 without monitor



4" Tachometer With Suzuki Troll Mode Scale

Easy to read 4" Tachometer has a scale from 0-7,000 RPMs for standard use, and a secondary scale from 0-3,000 RPMs with markers at 50 RPM intervals for use with the Suzuki Troll Mode System*. Gauge also includes warning lamps for Engine Temperature, Low Oil, Check Engine and Over-Rev. When in troll mode, Over-Rev lamp stays on to indicate that Troll mode has been engaged. The secondary RPM scale is designed to make setting and maintaining a lower troll speed simple. Compatible DF40A/50A/50AV/60A/60AV/70A/90A/115A/140A/200AP/250SS (DF300 requires digital instrumentation).*See engine owner's manual for information about Suzuki Troll Mode system. Not all models come equipped with trolling mode system. Accessory Troll Mode Switch required for Suzuki Troll Mode System use. Suzuki recommends the use of this gauge for trolling use.

34200-93J51 DF40A/50A/50AV/60A/60AV/70A/90A/115A/140A/200AP/250SS (DF300 requires digital instrumentation)



Trolling Mode Control Switch

Allows the use of the Suzuki Troll Mode on equipped engines. When Troll mode is engaged, this switch allows for adjustments of engine RPM in 50 RPM increments, from idle to 1200 RPM to make setting and maintaining a trolling speed easy. Consult owner's manual or Suzuki Outboard Dealer for additional details on Suzuki Troll System operation.

Compatible DF40A/50A/50AV/60A/60AV/70A/90A/115A/140A/200AP/250AP/300AP

37860-87L00 Trolling switch

Suzuki Instruments

Economically priced, high quality instruments feature easy plug-in wiring connections, perimeter-lighted dial, black bezels, contoured pointers and fog resistant glass lenses. All use standard 2" or 4" diameters for easy dash installation.



4" Speedometer

Easy to read 4" Speedometer features include lighted dial, contoured pointer and fog resistant glass lens.

*Requires Tubing 99105-80009.

99105-80002 Black 60 mph

99105-80009* Speedometer Tubing (not shown)



4" Tachometers

7,000 max R.P.M. Tachs are available with or without 4-Stroke monitor functions. Monitor functions include: Low Oil Pressure Warning, Engine Temperature Warning, Check Engine Warning and Over-Rev Limit Warning.

99105-80001 Black - With monitor functions

99105-80000 Black - Without monitor functions



Suzuki Instruments

Economically priced, high quality instruments feature easy plug-in wiring connections, perimeter-lighted dial, black bezels, contoured pointers and fog resistant glass lenses. All use standard 2" or 4" diameters for easy dash installation.



4" Speedometer

Easy to read 4" Speedometer features include lighted dial, contoured pointer and fog resistant glass lens.

*Requires Tubing 99105-80009.

99105-80102 White 60 mph

99105-80009* Speedometer Tubing (not shown)



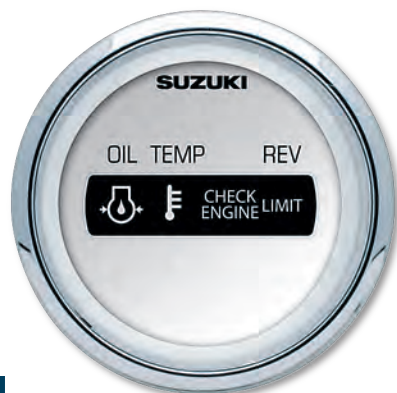
4" Tachometers

7,000 max R.P.M. Tachs are available with or without 4-Stroke monitor functions. Monitor functions include: Low Oil Pressure Warning, Engine Temperature Warning, Check Engine Warning and Over-Rev Limit Warning.

99105-80101 White - With monitor functions

99105-80100 White - Without monitor functions





2" Engine Monitor Gauge

Engine Monitor Gauge for 4-stroke engines helps alert you to low oil pressure, high engine temperature and engine over-rev.

99105-80108 White



2" Trim Gauge

To help maintain steering stability and good performance, proper trim angle is essential. The Trim Gauge helps you monitor the trim angle. For use with 2-wire senders.

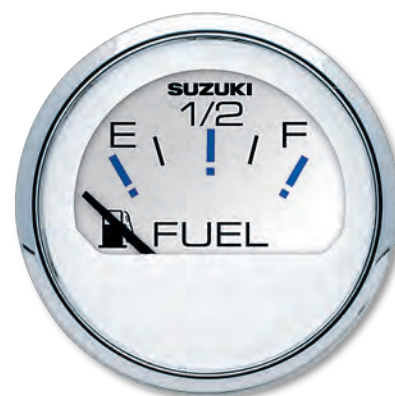
99105-80105 White



2" Hour Gauge

Handy Hour Meter helps you keep track of the time between services and total running time.

99105-80107 White



2" Fuel Gauge

Adding a Fuel Gauge can help you monitor fuel level. Connects easily using your boat's fuel sending unit harness.

99105-80103 White



2" Voltmeter

A well charged battery is essential for quick and easy starts. Monitor the charging system using a Voltmeter.

99105-80106 White



2" Water Pressure Gauge 30 psi

Bourdon-tube type gauge measures cooling water pressure. Instructions and dash installation hardware included. Order Installation kit for appropriate model.

99105-80104 White



Water Pressure Gauge Installation Kits

Kit includes fittings and hoses needed for motor to gauge connection.

34660-93J00	DF200/225/250/250AP/300AP	34660-87J00	DF40/50
34660-96J00	DF150/175/200A	34660-99E00	DF60/70
34660-90J02	DF40A/50A/50AV/60A/60AV/70A/90A/90/115/115A/140/140A		



14 | 15



2" Engine Monitor Gauge

Engine Monitor Gauge for 4-stroke engines helps alert you to low oil pressure, high engine temperature and engine over-rev.

99105-80008 Black



2" Trim Gauge

To help maintain steering stability and good performance, proper trim angle is essential. The Trim Gauge helps you monitor the trim angle. For use with 2-wire senders.

99105-80005 Black



2" Hour Gauge

Handy Hour Meter helps you keep track of the time between services and total running time.

99105-80007 Black



2" Fuel Gauge

Adding a Fuel Gauge can help you monitor fuel level. Connects easily using your boat's fuel sending unit harness.

99105-80003 Black



2" Voltmeter

A well charged battery is essential for quick and easy starts. Monitor the charging system using a Voltmeter.

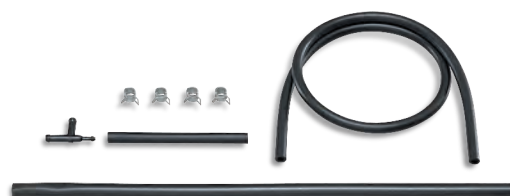
99105-80006 Black



2" Water Pressure Gauge 30 psi

Bourdon-tube type gauge measures cooling water pressure. Instructions and dash installation hardware included. Order Installation kit for appropriate model.

99105-80004 Black



Water Pressure Gauge Installation Kits

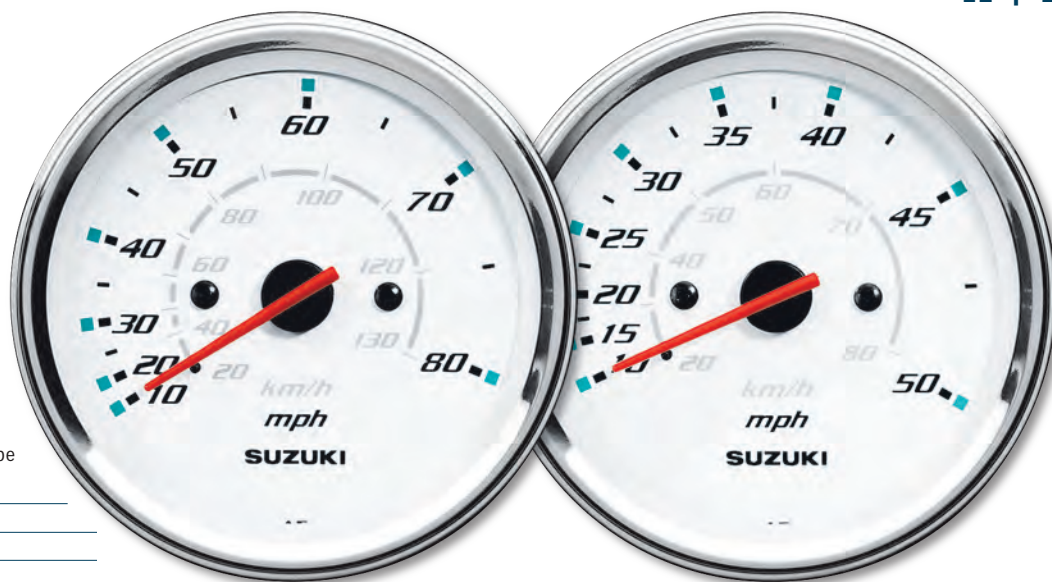
Kit includes fittings and hoses needed for motor to gauge connection.

34660-93J00	DF200/225/250/250AP/300AP	34660-87J00	DF40/50
34660-96J00	DF150/175/200A	34660-99E00	DF60/70
34660-90J02	DF40A/50A/50AV/60A/60AV/70A/90A/90/115/115A/140/140A		

**4" Speedometers**

Bourdon-tube type speedometer with readings in M.P.H. and Km/h. Includes vinyl tube, plus all installation instructions and hardware. *Pitot tube 34190-87D00 must be ordered separately.

34100-93J11	80 mph
34100-93J31	50 mph
34190-87D00*	Pitot Tube

**2" Hour Meter**

12 volt electric motor driven meter indicates the number of hours your outboard motor has been operated to indicate when periodic services are necessary.

34500-93J11	White
--------------------	-------

**2" Trim Meter**

Magnetic type gauge shows trim angle for optimum performance and efficiency.

34800-93J11	White
--------------------	-------

**2" Voltmeter**

A well charged battery is essential for quick and easy starts. Monitor the charging system using a Voltmeter.

34600-93J11	White
--------------------	-------

**2" Fuel Gauge**

Operates on 12 volts with magnetically damped needle. Works with most fuel tank sending units.

34300-93J11	White
--------------------	-------

**2" Water Pressure Gauge 15 psi**

Bourdon-tube type gauge measures cooling water pressure. Instructions and dash installation hardware included. Order Installation kit for appropriate model.

34650-93J31	White
--------------------	-------

**Water Pressure Gauge Installation Kits**

Kit includes fittings and hoses needed for motor to gauge connection.

34660-93J00	DF200/225/250/250AP/300AP
34660-96J00	DF150/175/200A
34660-99E00	DF60/70
34660-87J00	DF40/50
34660-90J02	DF40A/50A/50AV/60A/60AV/70A/90/90A/115/115A/140/140A