

# STERNDRIVE ENGINEERING

## Installing the Short Yoke

### Tools Needed:

#### Sockets

- 3/4" socket

#### Sealers/ Lubricants

- Grease

#### Miscellaneous

- 2 flat blade screwdrivers
- Hammer

#### Disclaimer

While every precaution has been taken in the preparation of these guides, Sterndrive Engineering, Inc. assumes no responsibility for errors or omissions. Neither is any liability assumed for damages resulting from use of the information contained herein. Publication of the procedures in these guides does not imply approval of the manufacturers of the products covered. Persons engaging the procedures herein do so at their own risk.



# Installing the Short Yoke

## STEP 1

If you have an older drive with an inline engine, you may need to reuse your old shorter yoke.

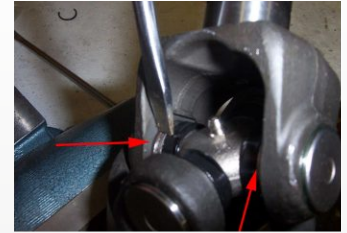
If you know you need the short yoke, let us know when ordering and we can ship one with the proper yoke installed. If you ordered the drive incorrectly you can swap the yoke with your old one.

It is possible to remove the yoke without disassembling the drive. It is much easier with someone to help hold the yoke while removing and installing the u-joint.

They make a special tool for pressing the u-joint apart. In this guide we will be using ordinary hand tools.



**1.1** First determine the length. The newer style is 9-9/16". The older style is 8-1/8". If you have an older style you will need to change it.



**1.2** Remove the clips that hold the u-joint together. Usually pushing on it with a screwdriver will do the trick. You may need to use a screwdriver on both sides.



**1.3** After the clips are out, tap the u-joint one direction until you can remove the cup on the opposite side. Use a suitable socket so you do not hit the yoke with the hammer.

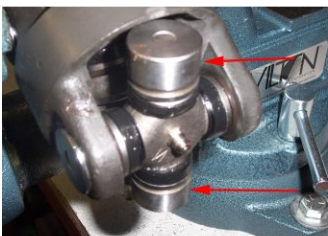


**1.4** Use a small pick or screwdriver to remove the seal if it has stuck to the u-joint.



**1.5** Now, using a socket of appropriate size, pound the u-joint the other direction. The purpose of the socket is so that you don't hit the u-joint post with a hammer. You want the socket to fit over the post and to contact the body of the u-joint before the post.

## STEP 2



**2.1** Now with the yoke out the way we can start reassembly. Install both u-joint cups on the u-joint and check to make sure they rotate smoothly. Then if all is okay, take them off. If it rotates rough, most likely it will have to be replaced.



**2.2** Install the yoke over the posts of the u-joint.



**2.3** Insert both u-joint cups while centering the yoke.

STEP 2 (cont'd on next page)



# Installing the Short Yoke

## STEP 2 (cont'd)



**2.4** Now tap the u-joint together. You may be able to tap one side in all the way and put the clip in, or you may need to tap each side in a little bit at a time. You want to be able to get both clips in.



**2.5** Now with both clips in, turn the yoke and see if it turns okay. If it is stiff you can try hitting one of the u-joint cups. If it is still stiff, try hitting the opposite side. That should clear it up. Now you will need to grease the u-joints using a grease gun, and grease approved for u-joints.

