

Sterndrive Assembly Instructions

SE116

Step 1

Separating your old drive

NOTE: If you bought a “Complete Unit” with the “Complete Install Kit”, you can skip ahead to step 2. If you did not and are reusing your old hardware, you will need to separate your old drive.



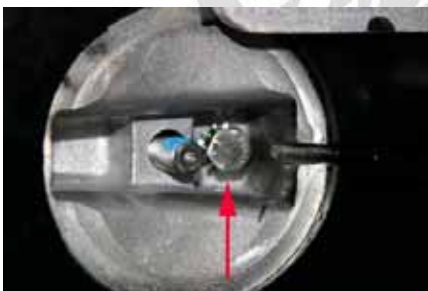
1.3 (Above) Remove the front bolt. Use a 1/2” wrench or socket.



1.1 (Above) Remove the trim tab bolt with a 1/2” socket.



1.4 (Above) Remove the four bolts and nuts. There are two on each side of the Drive. You will need two 5/8 wrenches to remove them. Once those are off you can separate the upper from the lower. It may be necessary to pop the halves loose. Use a rubber hammer or some other soft tool.

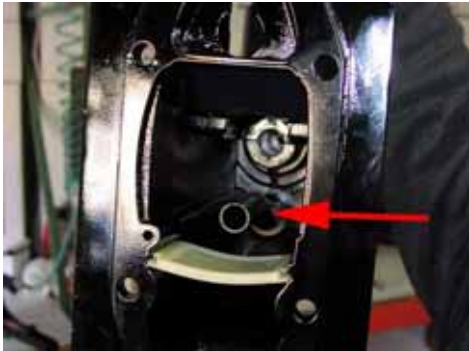


1.2 (Above) Remove the bolt that is under the trim tab. Use a 9/16 Socket.

Sterndrive Assembly Instructions

SE116

Step 2



2.1 (Above) Make sure that the water pipe pieces are in the proper areas. The water tube should be pushed into the grommet on the upper housing.



2.3 (Above) The two halves are now ready to be put together. You may find it easier to use two people to do this. As you bring the halves together, the first thing that needs to line up is the water tube with the tube guide.



2.5 (Above) Now install the hardware that holds the two halves together. Start with the 4 bolts and nuts on the sides of the unit.



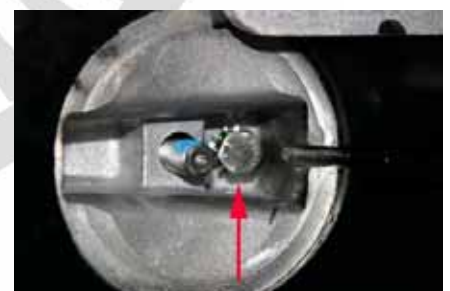
2.2 (Above) The black coupler and water tube guide are installed. The water tube guide will either be plastic or copper. Also make sure that the small quad ring (blue arrow) for the oil passage is installed. Put some marine grease on the vertical shaft splines.



2.4 (Above) The next thing to line up is the vertical shaft. It may be necessary to rotate the u-joint assembly clockwise to get the splines aligned. The units should drop completely onto the alignment pins. It may be necessary to push it together to get the water tube into the o-rings.



2.6 (Above) Then install the front bolt



2.7 (Above) Then the bolt under the anode. And finally, install the anode. Make sure after the anode is installed to spin the prop to check for clearance.

Sterndrive Assembly Instructions

SE116

Tools Needed:

Sockets

- 5/8" Socket
- 9/16" Socket
- 1/2" Socket

Sealers / Lubricants

- Grease

Misc.

- Ratchet
- 6" socket extension
- Large flat blade screwdriver
- Alignment tool (optional)
- Allen wrench 5/16" & 3/8"

Disclaimer

While every precaution has been taken in the preparation of these guides, SEI assumes no responsibility for errors or omissions. Neither is any liability assumed for damages resulting from use of the information contained herein. Publication of the procedures in these guides does not imply approval of the manufacturers of the products covered. Persons engaging in the procedures herein do so at their own risk.

Wrenches

- 5/8" Wrench
- 1/2" Wrench